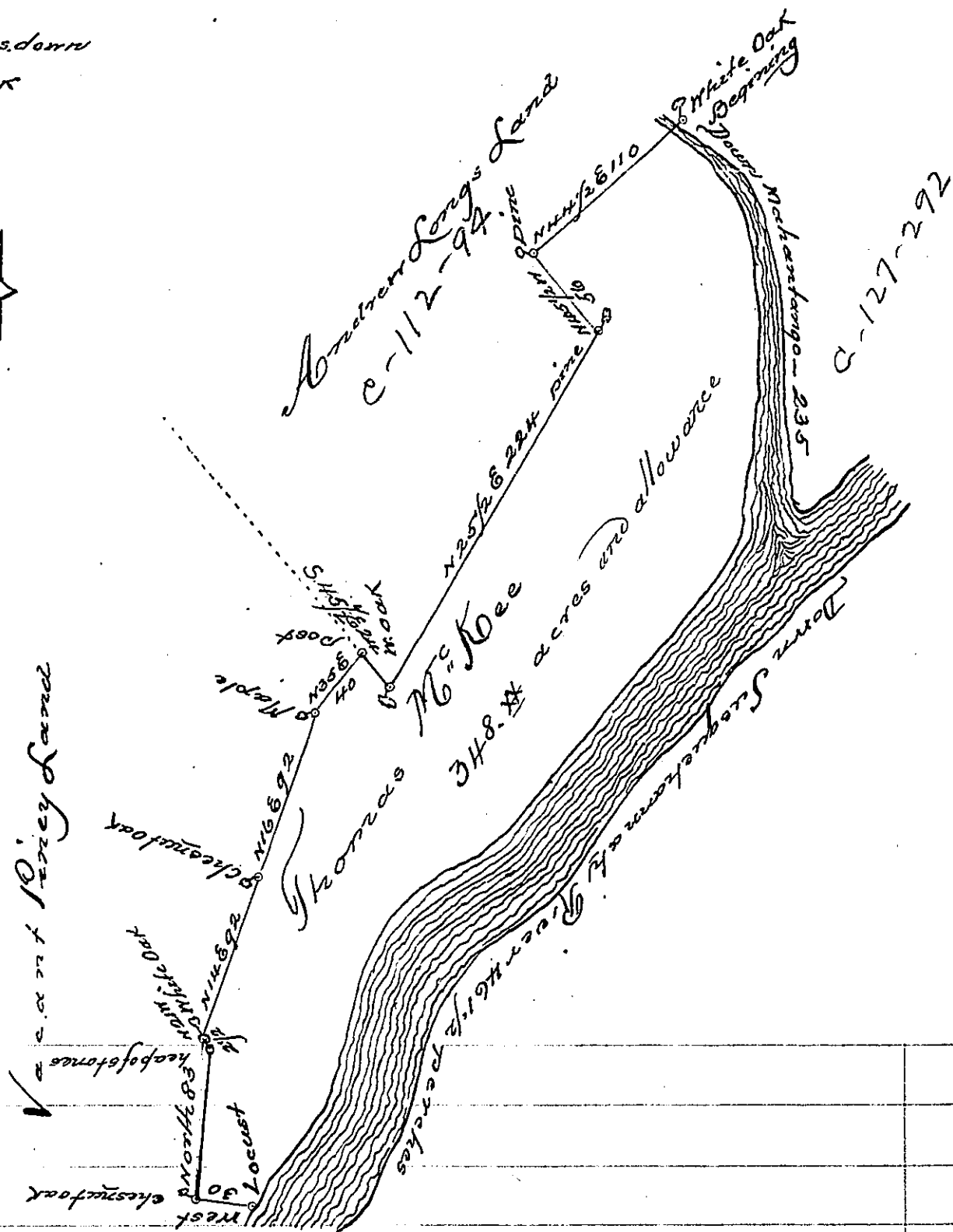


FORM No. 1.

Courses and Distances down  
Mahantango Creek  
S. 38. E 66  
S. 16. E 28  
S. 1. E 141

235 to the  
Moult and down  
Susquehanna -

S. 20. W. 24.  
S. 30. W. 20.  
S. 34. W. 33.  
S. 41. W. 30.  
S. 35. W. 24.  
S. 39. W. 58.  
S. 30. W. 15.  
S. 47. W. 26.  
S. 56. W. 14.  
S. 61. W. 20½  
obliterated  
S. 29. W. 26  
S. 3. W. 14½  
S. 11. W. 60.  
S. 32. W. 24.  
S. 30. W. 37½  
S. 33½. W. 15  
461½



The Draught of a tract of land called — situate on the west side of Susquehanna below and adjoining the mouth of Mahantango creek in the county of Cumberland, containing three hundred forty eight acres ~~of parcels~~ with the usual allowance of six acres per cent for Roads resurvey'd the 21<sup>st</sup> day of May Anno Dom. 1768, agreeable to the lines of the original survey, made in pursuance of a warrant from the Honble Proprietaries to Thomas McKeen. Bearing date at Philad<sup>a</sup> the 5<sup>th</sup> day of March, Anno Dom. 1755

To John Lukens Esq  
S. G. of Pennsylvania

Wm. McClay D.S.

IN TESTIMONY that the above is a copy of the original remaining on file in the Department of Internal Affairs of Pennsylvania, made conformably to an Act of Assembly approved the 16th day of February, 1833, I have hereunto set my Hand and caused the Seal of said Department to be affixed at Harrisburg, this ~~22~~ 27<sup>th</sup> day of March, 1907.

*Geo. P. Brown*  
Secretary of Internal Affairs.